



Operating Methodology

Evidence base



Page 2

Expert scoping & filtering



Page 3

Validity testing



Page 4

Key lines of enquiry



Page 5

Enquiry



Page 6

Delivery

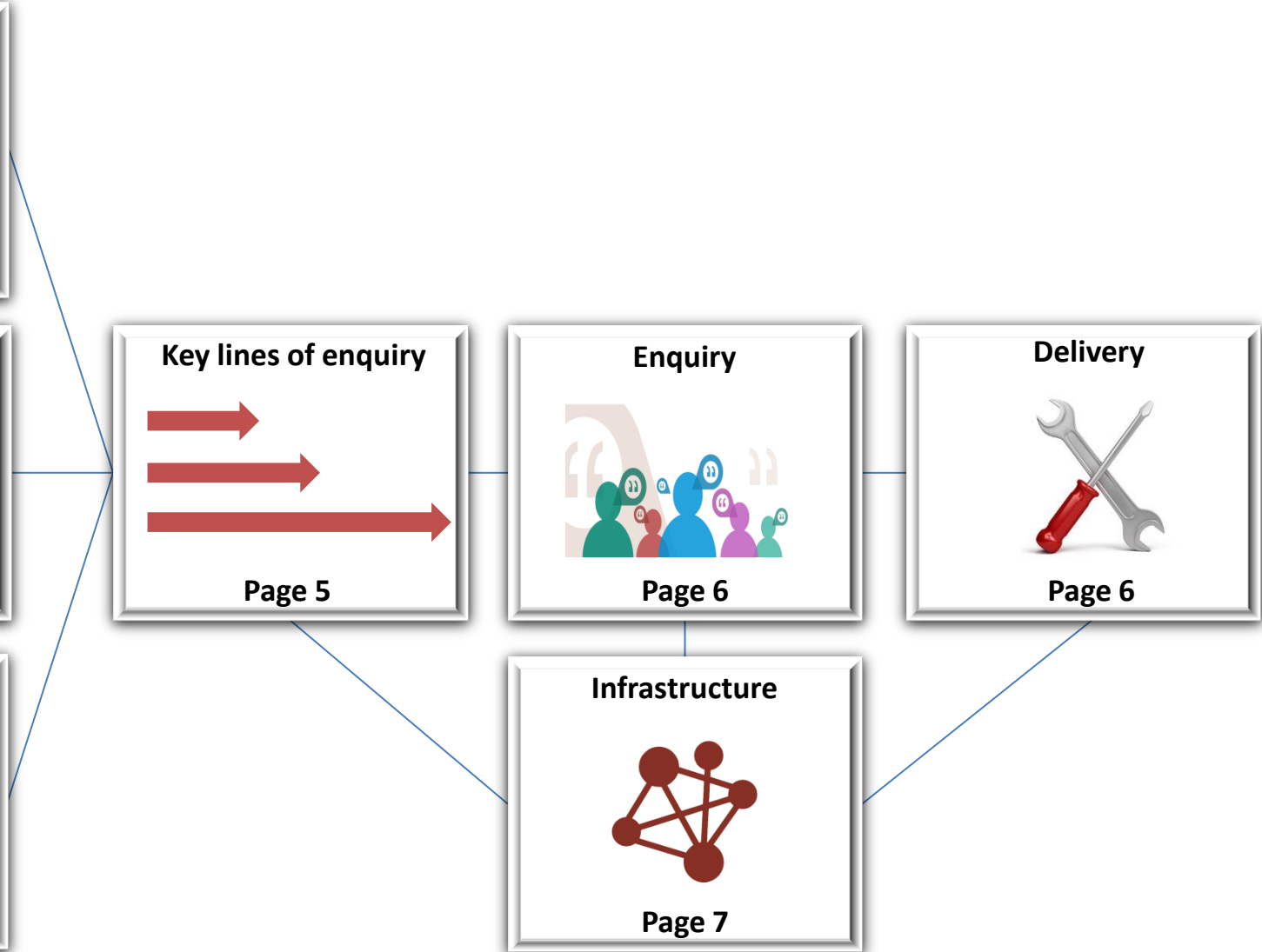


Page 6

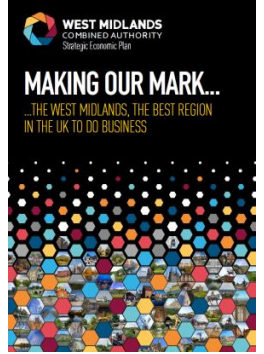
Infrastructure



Page 7



Evidence base



What

Drawing out the key elements with the SEP evidence base

Utilising existing and future productivity and skills information, research and expertise

Public + private sector analysis and relevance

(subject to regular updating and re-working)

How/who

How: Through a series of workbook type sessions to ensure that we have a broad and manageable spectrum

Who:

- Sarah Middleton
- Rachel Egan
- Paula Deas
- Katie Trout
- Pam Waddell

When

To be completed by the end of August 2016 as a first stage

Expert scoping & filtering



What/when

A series of workshops with experts in the field to ensure that we focus on areas (KLOEs) where the Commission will add most value

- 1st Skills – 4/7/16
- Productivity - tbc
- Others to follow as required
- Follow on deep dives with companies and organisations at the cutting edge

Who

Deirdre Hughes OBE, Warwick University
Paul Maropoulos, Aston University
Julian Beer, Birmingham City University
Rebecca Riley, City REDi
Nicola Turner MBE, HEFCE
Marion Plant OBE, NWHC
Lowell Williams, Dudley College
Michael Davis, Ecorys
Colonel David Norris OBE
Jonnie Turpie, Maverick TV
David Hardman, Innovation Birmingham
Ollie Clarke, Modern Dream
Sarah Windrum, Emerald Communications
Jo Lopes, JLR
Tony Davis, West Midlands Academic Health Science Network
Mike Reade, Balfour Beatty
Simon Eastwood, Carillion
Lesley Giles, UKCES
Nick Page, Solihull MBC
Jan Britton, WMCA Chief Operating Officer
Rachel Egan, WMCA Skills Lead
Sarah Middleton, Black Country Consortium
Rachel Jones, WMCA PSR Lead
Kirston Nelson, Coventry CC
Richard Parker, PWC
Andrew Campbell, LGA
Richard Hutchins, Marketing Birmingham
Andrew Cleaves, GBS LEP
George Andrews, Black Country LEP
Jonathan Browning, Coventry & Warwickshire LEP
Rachael Stewart, Coventry & Warwickshire LEP
Colin Parker, Black Country LEP

The 'experts in the field' may well become KLOE lead commissioners and/or join the KLOE work plan as experts

Validity testing



What

P&S Commission

Line through to

To the WMCA SEP Board
through to the WMCA
Board

Who

Leadership Group:

- Commission Chair
- Nick Page
- Martin Reeves
- Jonathan Browning
- Andy Street
- Stuart Towe
- Elected member with WMCA P&S lead

Expert support:

- Lead Commissioners when identified

Specialist co-ordination &
specialist advisors:

- Sara Middleton
- Rachel Egan

When

1st meeting in August
with a view to starting
active work in
September 2016

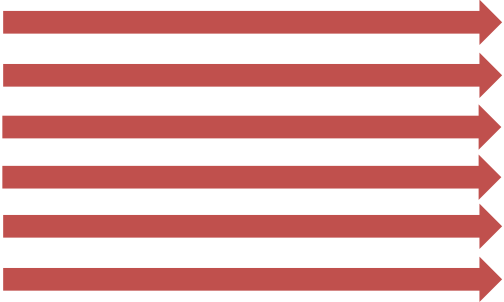
Key lines of enquiry

Dec 16

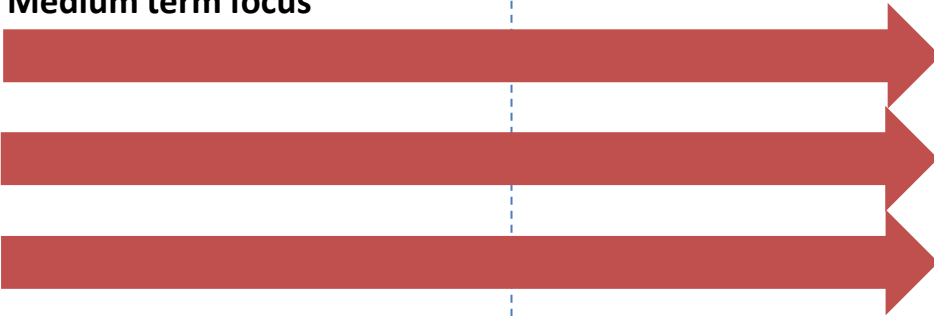
Apr 17

Dec 17

**Immediate focus –
maximum 6 KLOEs**



Medium term focus



Long term focus





Enquiry and Delivery



- Portfolio analysis
- Options
 - Interventions
 - Actions



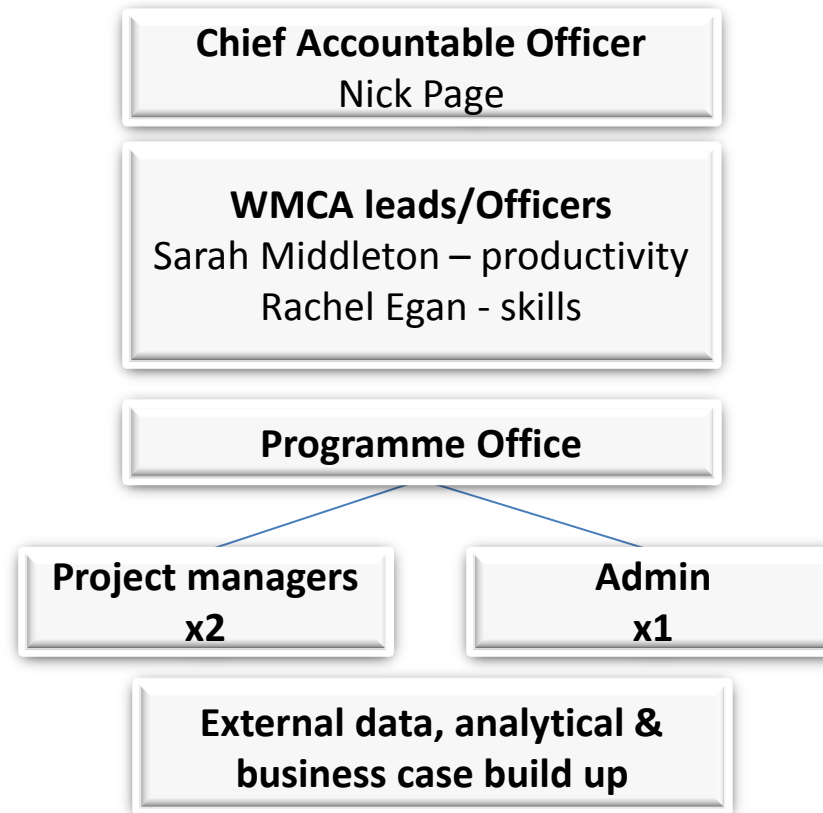
LEP Chairs
Jonathan Browning
Andy Street
Stuart Towe
Martin Reeves

Nick Page
Rachel Egan
Sarah Middleton
Paula Deas
Katie Trout

Within the methodology, being clear on what we can do anyway and what requires delegation and what requires devolution. Link through to the WMCA Devolution Sub-Group and support infrastructure



Infrastructure



Initial set up requirements. This will be monitored and revised at regular intervals via enquiry and delivery structure

Via WMCA infrastructure



Funding framework to be developed by
Martin Reeves and the WMCA
Programme Office



Timeline

